

FIGURE 1. The influence of canopy treatments, vine development and cordon height on the average aroma and wine quality of Pinotage vineyards in climate region 2 (2003 - 2007).

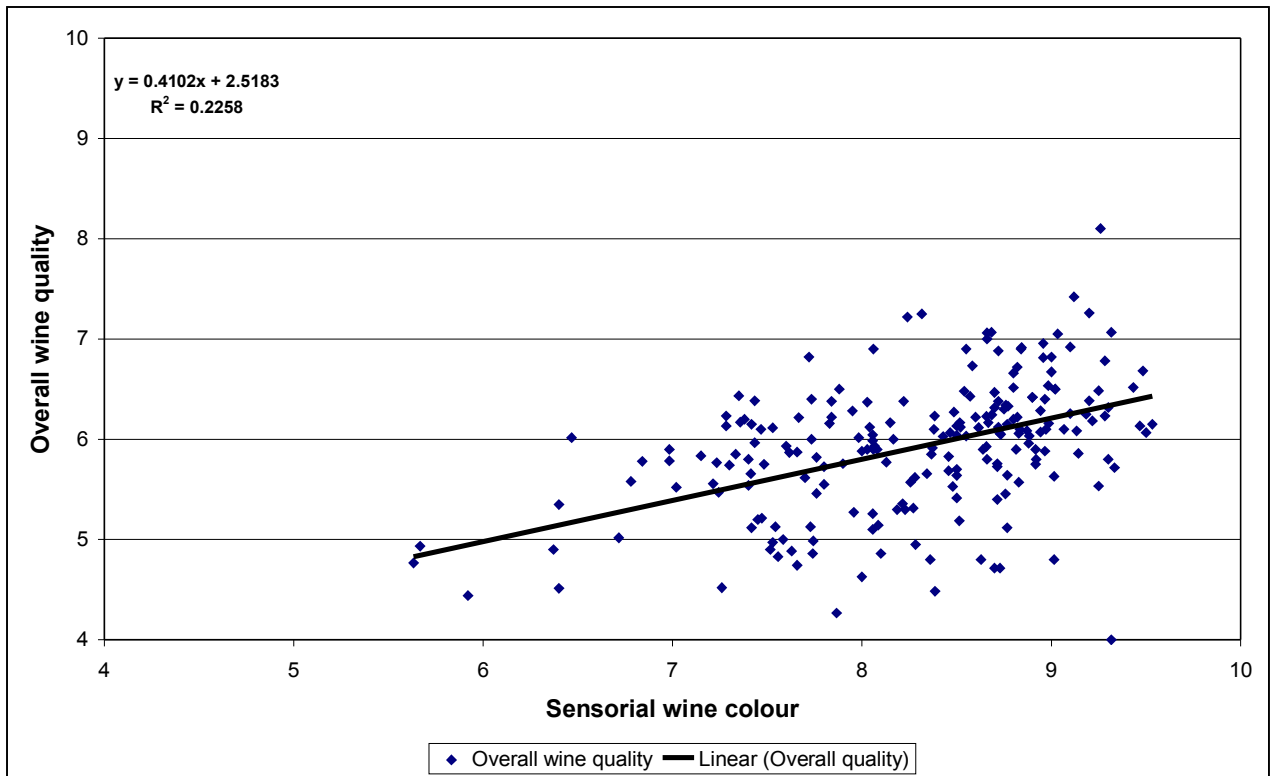


FIGURE 2. Relationship between sensorial wine colour and the wine quality of Pinotage in climate region 2 (2003 - 2007).

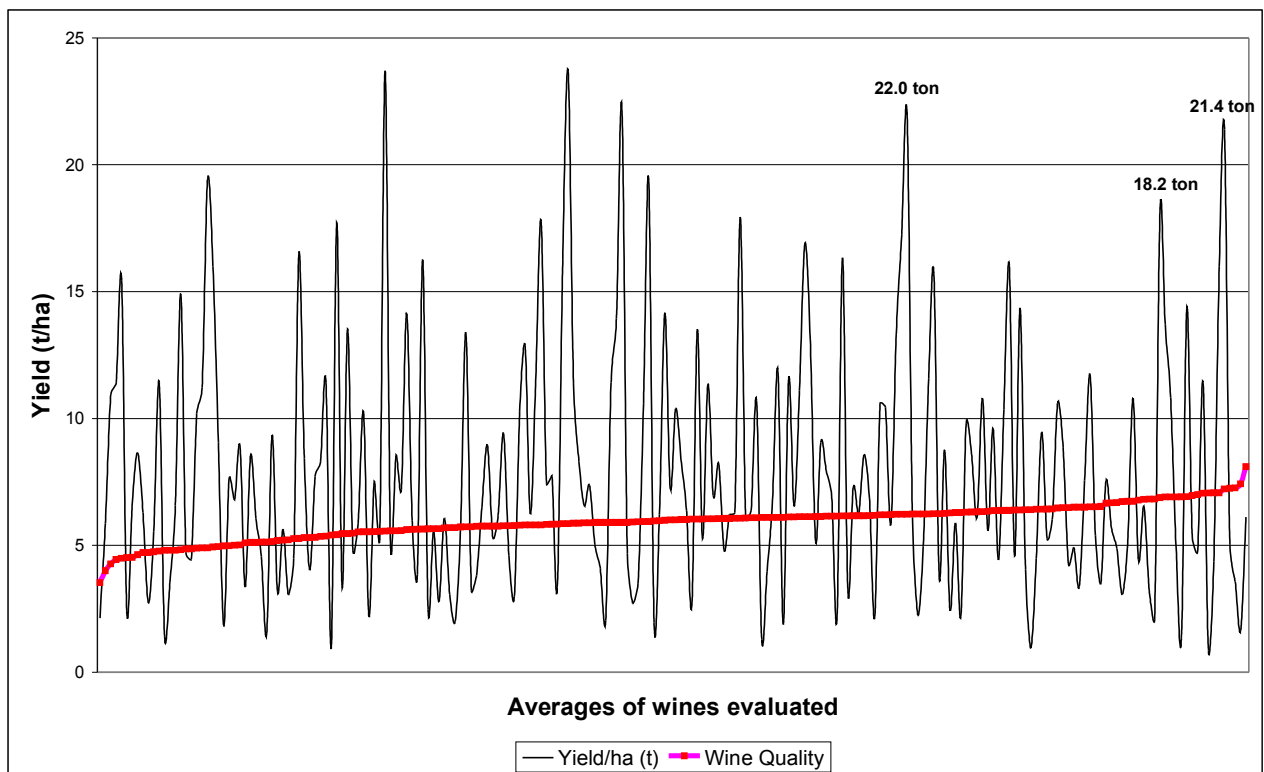


FIGURE 3. Relationship between the yield/ha and Pinotage wine quality in climate region 2 (2003 - 2007).